



“ Parents, teachers and all students, welcome to Semester 2/2557. ”



### Morning School Preparations

Because of the heavy traffic in the morning, parents need to leave early to come to school. Students normally sleep in the car on the way to school and as a result they're not ready to hop out when arriving at school. It takes time to get their school bag and other things, making cars stop longer than necessary which slows down the traffic flow in the school. So this semester, we are asking parents to make sure their child's school bag and other things are in the seat next to the student (not in the trunk/boot) and that they have their snack money and other fees (if applicable) when leaving home. When driving into school, remind your child to check inside their school bag and have their other things ready, so they can hop out quickly. Parents also need to recheck the car that they have everything.

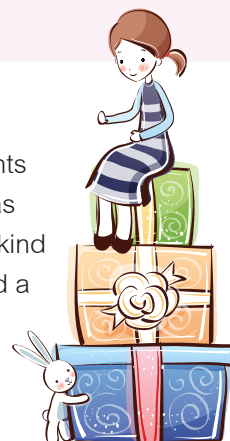
### Schedule for Yearbook Class Photos

School has scheduled Yearbook Class photos for **Infant Department** on 3rd-7th Nov. 2014 and for **Primary and Secondary Department** on 24th-28th Nov. 2014 (Class teachers will give details class photo dates for each class in the homework notebook / Communication book). Parents please make sure **students wear the regular school uniform** on the day of the class photo and unless it's an emergency, **please don't take the day off.**



### NO gifts please!!!

The Christmas - New Year break is a long holiday. Parents usually travel and buy gifts to give to each other. Sarasas Ektra School asks parents and students not to give any kind of gifts to teachers or the management. We want to build a culture of equality for all students. Therefore, if parents find that any teachers or management request any gifts, please inform the school administration offices.



### Informing School about Student Absence: Sick Leave /Personal Leave/ Leave for traveling abroad.



Every time a student is absent from school, parents please inform the admin office at 7.00 am. When the students return to school, please submit a letter explaining the reason or a medical certificate to the class teacher. If traveling outside Thailand for a long time during the semester, parents please submit a request in advance to the admin office.

### Invitation for Submission of Students' work, activities and successes.

During the holiday, any students that participated in good activities for our society or had the opportunity to show their talents in competitions or gatherings are invited to submit information / photo files / video clips, to school at [admin@ektra.ac.th](mailto:admin@ektra.ac.th). We can publish details on the school website so as to be a good role model and inspiration for other students.



## Drama Show

The Secondary Department Drama Club, will be performing this year's show 'Poseidon's Pirate' on **Friday 21st and Saturday 22nd Nov. 2014** at the Auditorium, 4th floor, building 6, Primary Department. The show will last from on 6.30 pm. – 8.30 pm.



Not only will there be a fantastic drama show, but a wonderful musical performance of 'The Pirates of the Caribbean' and other songs from the Secondary music department students too. Interested parents can **purchase tickets starting on 7th November 2014** at the admin office of all departments.

## Activity Calendar November – December 2014

● Infant ○ Primary ● Secondary ● All

Sun	Mon	Tue	Wed	Thu	Fri	Sat
						01
02	03	04	05	06	07	08
09	10	11	12	13	14	15
16	17	18	19	20	21	22
23	24	25	26	27	28	29


Sun	Mon	Tue	Wed	Thu	Fri	Sat
30	01	02	03	04	05	06
07	08	09	10	11	12	13
14	15	16	17	18	19	20
21	22	23	24	25	26	27
28	29	30	31	01	02	03

Date	Activity	Note
Sun.2nd– Thu. 6th Nov. 14	Secondary	Y.11 Leadership Potential Camp
Thu. 6th Nov. 14	All	Loy Krathong Day Celebration
Sat. 8th Nov. 14	Primary	Y.5 – Y.6 Leadership Camp
Fri.14th Nov. 14	Primary	Open House for Interested Parents
Wed.19th–Thu. 20th Nov. 14	Primary	Mathematics Week
Fri.21st Nov. 14	Infant	International Cultural Day
Fri. 21st– Sat. 22nd Nov. 14	Secondary	DRAMA Festival 2014 : "Poseidon's Pirate"
Fri. 28th Nov. 14	Primary	Primary Music Contest (district 4 schools)
Tues.2nd Dec. 14	Infant	Father's Day Ceremony
Wed. 3rd Dec. 14	Secondary	Father's Day Ceremony
Thu. 4th Dec. 14	Primary	Father's Day Ceremony
Fri. 5th Dec. 14	All	King's Birthday Holiday
Tues. 9th Dec. 14	Primary & Secondary	Constitution Day Activities
Wed. 10th Dec. 14	All	Constitution Day Holiday
Mon. 15th – Tues. 23rd Dec. 14	Primary & Secondary	X'mas Performances Y.1 – Y.12 *
Wed. 17th–Tues. 23rd Dec. 14	Infant	X'mas Performances NC. – KG.3 *
Wed. 24th Dec. 14	All	Fund Raising Day
Thu. 25th Dec. 14–Sun.4th Jan. 15	All	Christmas and New Year Holidays

\*Note : The show scheldule is on the next page.



## Saragas Ektra's X'mas Performances 2014

Date / Time		Mon	Tue	Wed	Thu	Fri	Mon	Tue
		15 Dec	16 Dec	17 Dec	18 Dec	19 Dec	22 Dec	23 Dec
Infant Department (Soi. 19)	09.00-09.25			School Choir	NC.1	NC.3	NC.2	School Choir
	09.25 -09.50			KG.1F	KG.1A	KG.1C	KG.1B	NC.4
	09.50-10.15			KG.1E	KG.2B	KG.2A	KG.2C	KG.1D
	10.15-10.40			KG.2G	KG.2E	KG.2D	KG.3B	KG.2F
	10.40-11.05			KG.3D	KG.3C	KG.3G	KG.3E	KG.3A
	11.05-11.30							KG.3F
Primary / Secondary Department (Soi 20,26)	08.30 - 08.45	Primary / Secondary Chorus						
	08.45 - 09.00	Y.1B	Y.1D	Y.5E	Y.1A	Y.1C	Y.1F	Y.1E
	09.00 - 09.15	Y.12B	Y.12A	Y.12D	Y.12E	Y.10E&F	Y.3E	Y.3D
	09.15 - 09.30						Y.11E	Y.11A
	09.30 - 09.45	Y.3B	Y.9C	Y.3A	Y.8A	Y.3F	Y.8B	Y.8E
	09.45- 10.00	Y.11B	Y.5B	Y.11C	Y.5A	Y.11D	Y.5D	Y.5F
	10.00 - 10.15	Y.8C	Y.3C	Y.8D	Y.6F	Y.5C	Y.6D	Y.6E
	10.15 - 10.30	Y.6A		Y.6B		Y.6C		
	12.45 - 13.00	Primary / Secondary Chorus						
	13.00 - 13.15	Y.2B	Y.2G	Y.2A	Y.2F	Y.2D	Y.12C	Y.12F
	13.15 - 13.30	Y.7A	Y.7E	Y.7B	Y.7D	Y.7C		
	13.30 - 13.45	Y.9A	Y.9E	Y.9B	Y.10B	Y.10C	Y.2C	Y.2E
	13.45 - 14.00	Y.4A	Y.4D	Y.4B	Y.9D	Y.4C	Y.10A	Y.10D
	14.00 - 14.15						Y.4E	Y.4F

\*The schedule might be change under circumstance. Please follow school news at [www.ektra.ac.th](http://www.ektra.ac.th)

**Contact Admin office** : Infant Dept. Tel. 02-674-2450-2 Fax. 02-674-2663

Primary & Secondary Depart. Tel. 02-213-0117, 02-212-0157, 02-674-0900 Fax. Primary: 02-674-0499 Secondary: 02-212-0152  
email : [admin@ektra.ac.th](mailto:admin@ektra.ac.th)